

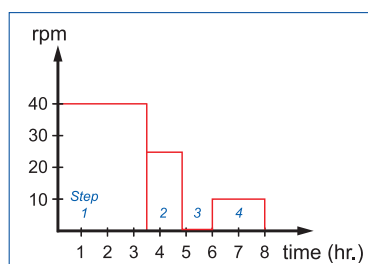
## witeg<sup>®</sup> Digital Orbital Shaker, "SHO", 10~300 rpm, Low Noise & Long Life Cycle, with Certi. & Traceability with Programmable Digital Feedback Control, Available Rubber Mat-/Universal-Platform, without Platform



**Digital Orbital Shaker (SHO-1D)  
with Rubber Mat Platform (SP110)**



**Digital Orbital Shaker (SHO-2D)  
with Universal Platform (SP200)**



**Example of Program**

- with Certificate & Traceability : Controlled by Serial Number, Certificate, Delivery-information, and Traceable Data Base System
- Ideal for Culturing Cells to Hybridization, Staining and Destaining Gels, and Combinatorial Chemistry
- **Patented Jog-Shuttle Control System**
- CE Certified
- **PL(Product Liability) Insurance**

- \* Hybridization, Washing Blots, Culturing Microbes
- \* Ideal for Culturing Cells to Hybridization, Staining and Destaining Gels, and Combination Chemistry
- \* Optimal Platform Rotation for Intensive Mixing
- \* Brushless DC Motor (Low Noise & Long Life Cycle)
- \* High Precision Digital Rotation Speed Control
- \* Programmable Operation Mode Supported
- \* Digital LCD with Back-Light Function
- \* Smooth Start and Change of Shaking Speed
- \* Universal Platform for Easy and Fast Fixation of Any Kind of Flasks and Bottles (Optional)
- \* Storage Function, Alarm & Overload Protection
- \* Locking Mode Supported for Experimental Safety (Input to Jog-Shuttle can be Disabled)
- \* Variable accessories are available (Optional)

### Specification

Model		Base Platform : 230×230 mm “SHO-1D” Only Unit	Base Platform : 350×350 mm “SHO-2D” Only Unit
Shaking Motion		Orbital Motion	
Speed Range		10 ~ 300 rpm	
Max. Load		8 kg	10 kg
Amplitude of Rotation (mm)		10, 15, 20 Available (15 as Factory Default)	20, 30, 40 Available (30 as Factory Default)
Motor		Brushless DC Motor	
Permissible Ambient Temperature		Ambient +5 ~ 50℃	
Permissible Relative Moisture		85%	
Timer & Alarm		99hr 59min (with Continuous run.), Error status & Timer-end	
Display		Digital LCD with Back- Light Function	
Controller		Programmable Digital Feedback Controller with Jog- Shuttle Switch(Turn+Pus)	
Program Function		10 Steps, 6 Programs	
Platform		Universal Platform for various Shapes & Size of Flask	
Max. Capacity of Flask Holder	FH100	9 ea	20 ea
	FH250	7 ea	16 ea
	FH500	4 ea	9 ea
Holder		Durable & Flexible Plastic Flask holder	
Dimension (w×d×h) (mm)		250×330×150	400×480×160
Base Platform Size (mm)		230×230	350×350
Safety Circuit		Overload Protector for Motor	
Net Weight		14 kg	20 kg
Others		CE Certified, PL(Product Liability) Insurance Smooth Start and Change of the Stirring Speed for Stable Running Storage Function (Program, RPM, Timer) Locking Mode (Jog- Shuttle Input Disabled) Alarm ( Error Status and Timer-end )	
Packing Size (w×d×h) (mm) & Gross Weight		450×350×250	580×500×250
		18 kg	23 kg
Power Consumption		40 W	
Power plug type		Hybrid E+F	
Power Supply*		AC 230V, 1N~, 50/60Hz	

\* Other Specifications are available upon Customer's Request.

<Continued on next page>

Cat. No	Description
---------	-------------

Articles
----------

<Continued from... Digital Orbital Shaker, "SHO" >

### Ordering Information

#### 230 × 230 Base Platform, "SHO-1D" Unit Only

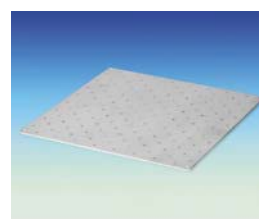
DH.WSO04010 Digital Orbital Shaker, "SHO-1D" Unit only, without Platform, 230V

#### 350 × 350 Base Platform, "SHO-2D" Unit Only

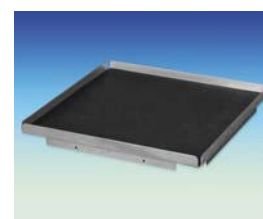
DH.WSO04012 Digital Orbital Shaker, "SHO-2D" Unit only, without Platform, 230V

#### Optional Accessories

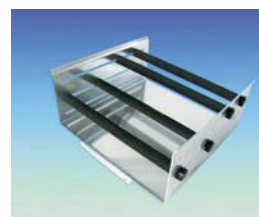
- DH.WSO504100 (1) Universal Platform, "SP100", for "SHO/SHR-1D",  
w230 × d230mm
- DH.WSO504200 (1) Universal Platform, "SP200", for "SHO/SHR-2D",  
w350 × d350mm
- DH.WSO504110 (2) Rubber Mat Platform, "SP110", for "SHO/SHR-1D",  
w270 × d270mm
- DH.WSO504210 (2) Rubber Mat Platform, "SP210", for "SHO/SHR-2D",  
w370 × d370mm
- DH.WSO504120 (3) Platform for Flasks, "SP120", for "SHO/SHR-1D",  
w350 × d230 × h153mm
- DH.WSO504220 (3) Platform for Flasks, "SP220", for "SHO/SHR-2D",  
w350 × d350 × h153mm
- DH.WSO504130 (4) Platform for Separatory Funnels, "SP130"  
for "SHO/SHR-1D", w350 × d235 × h174mm
- DH.WSO504230 (4) Platform for Separatory Funnels, "SP230"  
for "SHO/SHR-2D", w351 × d355 × h174mm
- DH.WIS504030 (5) Flask Holder, "FH100", 50~ 100ml, for "SHO", "SHR" and "WIS"
- DH.WIS504035 (6) , "FH250", 200~ 300ml, for "SHO", "SHR" and "WIS"
- DH.WIS504040 (7) , "FH500", 500~1000ml, for "SHO", "SHR" and "WIS"



(1) Universal Platform  
"SP100" / "SP200"



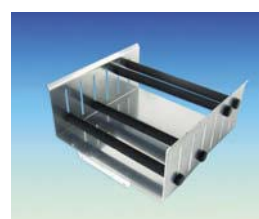
(2) Rubber Mat Platform  
"SP110" / "SP210"



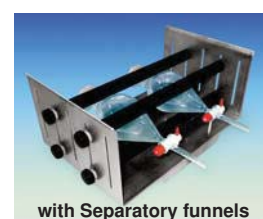
(3) Platform for Flasks "SP120" / "SP220"



with Flasks

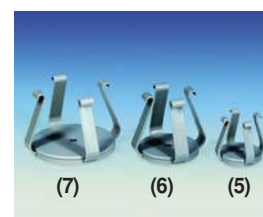


(4) Platform for Separatory Funnels "SP130" / "SP230"



with Separatory funnels

※ witeg general catalogue pages : 33, 34, 36, 148~152, 294~296, 308



(7) (6) (5)

Flask Holders  
"FH500"/"FH250"/"FH100"

### Platform Selection Guide

APPLICATION	PLATFORM	HOLDER
Culturing Microbes Mixed with Erlenmeyer Flask	<b>Universal Platform</b> SP100 for SHO/SHR-1D SP200 for SHO/SHR-2D	<b>Flask Holder</b> FH100 (50~100ml) FH250 (200~300ml) FH500 (500~1000ml)
Staining/Destaining Gel, Washing Blots Gentle Mixing(Shaking)	<b>Rubber Mat Platform</b> SP110 for SHO/SHR-1D SP210 for SHO/SHR-2D	
Mixed Sample, Combination Chemistry Combinatorial Chemistry, with Round Flask	<b>Platform for Flask</b> SP120 for SHO/SHR-1D SP220 for SHO/SHR-2D	
Combinatorial Chemistry with Separatory Funnel	<b>Platform for Separatory Funnels</b> SP130 for SHO/SHR-1D SP230 for SHO/SHR-2D	
with Variety of Size Flask & Bottle	<b>Universal Spring Rack</b> SP140 for SHO/SHR-1D SP240 for SHO/SHR-2D	