

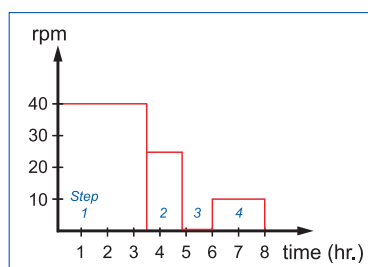
## witeg® Digital Reciprocating Shaker, "SHR", 10~300 rpm, Low Noise & Long Life Cycle with Programmable Digital Feedback Control, Available Rubber Mat-/Universal-Platform, without Platform



**Digital Reciprocating Shaker (SHR-1D)  
with Rubber Mat Platform (SP110)**



**Digital Reciprocating Shaker (SHR-2D)  
with Universal Platform (SP200)**



**Example of Program**

- with Certificate & Traceability : Controlled by Serial Number, Certificate, Delivery-information, and Traceable Data Base System
- Ideal for Culturing Cells to Hybridization, Staining and Destaining Gels, and Combinatorial Chemistry
- **Patented Jog-Shuttle Control System**
- **CE Certified**
- **PL(Product Liability) Insurance**

- \* Hybridization, Washing Blots, Culturing Microbes
- \* Ideal for Culturing Cells to Hybridization, Staining and Destaining Gels, and Combination Chemistry
- \* Optimal Platform Rotation for Intensive Mixing
- \* Brushless DC Motor (Low Noise & Long Life Cycle)
- \* High Precision Digital Rotation Speed Control
- \* Programmable Operation Mode Supported
- \* Digital LCD with Back-Light Function
- \* Smooth Start and Change of Shaking Speed
- \* Universal Platform for Easy and Fast Fixation of Any Kind of Flasks and Bottles (Optional)
- \* Storage Function, Alarm & Overload Protection
- \* Locking Mode Supported for Experimental Safety (Input to Jog-Shuttle can be Disabled)
- \* Variable accessories are available (Optional)

### Specification

| Model                                       |       | Base Platform : 230×230 mm<br>“SHR-1D” Only Unit  | Base Platform : 350×350 mm<br>“SHR-2D” Only Unit |
|---|-------|---|--|
| Shaking Motion                              |       | Reciprocating   |  |
| Speed Range                                 |       | 10 ~ 300 rpm  |  |
| Max. Load                                   |       | 8 kg  | 10 kg  |
| Amplitude of Rotation (mm)                  |       | 10, 15, 20 Available<br>(15 as Factory Default)   | 20, 30, 40 Available<br>(30 as Factory Default)  |
| Motor                                       |       | Brushless DC Motor  |  |
| Permissible Ambient Temperature             |       | Ambient +5 ~ 50℃  |  |
| Permissible Relative Moisture               |       | 85%   |  |
| Timer & Alarm                               |       | 99hr 59min (with Continuous run.), Error status & Timer-end   |  |
| Display                                     |       | Digital LCD with Back - Light Function  |  |
| Controller                                  |       | Programmable Digital Feedback Controller<br>with Jog - Shuttle Switch(Turn+Pus)   |  |
| Program Function                            |       | 10 Steps, 6 Programs  |  |
| Platform                                    |       | Universal Platform for various Shapes & Size of Flask   |  |
| Max. Capacity<br>of Flask Holder            | FH100 | 9 ea  | 20 ea  |
|   | FH250 | 7 ea  | 16 ea  |
|   | FH500 | 4 ea  | 9 ea   |
| Holder                                      |       | Durable & Flexible Plastic Flask holder   |  |
| Dimension (w×d×h) (mm)                      |       | 250×330×150   | 400×480×160                                      |
| Base Platform Size (mm)                     |       | 230×230   | 350×350  |
| Safety Circuit                              |       | Overload Protector for Motor  |  |
| Net Weight                                  |       | 14 kg   | 20 kg  |
| Others                                      |       | CE Certified, PL(Product Liability) Insurance<br>Smooth Start and Change of the Stirring Speed for Stable Running<br>Storage Function (Program, RPM, Timer)<br>Locking Mode (Jog -Shuttle Input Disabled)<br>Alarm ( Error Status and Timer-end ) |  |
| Packing Size (w×d×h) (mm)<br>& Gross Weight |       | 450×350×250   | 580×500×250                                      |
|   |       | 18 kg   | 23 kg  |
| Power Consumption                           |       | 40 W  |  |
| Power plug type                             |       | Hybrid E+F  |  |
| Power Supply*                               |       | AC 230V, 1N~, 50/60Hz   |  |

\* Other Specifications are available upon Customer's Request.

<Continued on next page>

| Cat. No | Description | Articles |
|---------|-------------|----------|
|---------|-------------|----------|

<Continued from... Digital Reciprocating Shaker, "SHR">

### Ordering Information

#### 230 × 230 Base Platform, "SHR-1D" Unit Only

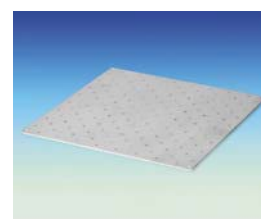
DH.WSR04020 Digital Orbital Shaker, "SHO-1D" Unit only, without Platform, 230V

#### 350 × 350 Base Platform, "SHR-2D" Unit Only

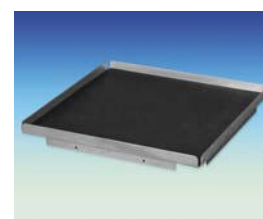
DH.WSR04022 Digital Orbital Shaker, "SHO-2D" Unit only, without Platform, 230V

#### Optional Accessories

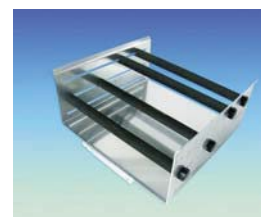
- DH.WSO504100 (1) Universal Platform, "SP100", for "SHO/SHR-1D",  
w230 × d230mm
- DH.WSO504200 (1) Universal Platform, "SP200", for "SHO/SHR-2D",  
w350 × d350mm
- DH.WSO504110 (2) Rubber Mat Platform, "SP110", for "SHO/SHR-1D",  
w270 × d270mm
- DH.WSO504210 (2) Rubber Mat Platform, "SP210", for "SHO/SHR-2D",  
w370 × d370mm
- DH.WSO504120 (3) Platform for Flasks, "SP120", for "SHO/SHR-1D",  
w366 × d355 × h175mm
- DH.WSO504220 (3) Platform for Flasks, "SP220", for "SHO/SHR-2D",  
w366 × d355 × h175mm
- DH.WSO504130 (4) Platform for Separatory Funnels, "SP130"  
for "SHO/SHR-1D", w350 × d230 × h153mm
- DH.WSO504230 (4) Platform for Separatory Funnels, "SP230"  
for "SHO/SHR-2D", w350 × d350 × h153mm
- DH.WIS504030 (5) Flask Holder, "FH100", 50~ 100ml, for "SHO", "SHR" and "WIS"
- DH.WIS504035 (6) , "FH250", 200~ 300ml, for "SHO", "SHR" and "WIS"
- DH.WIS504040 (7) , "FH500", 500~1000ml, for "SHO", "SHR" and "WIS"



(1) Universal Platform  
"SP100" / "SP200"



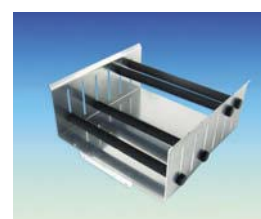
(2) Rubber Mat Platform  
"SP110" / "SP210"



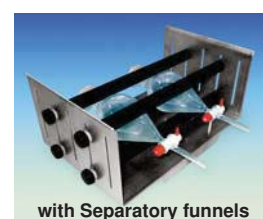
(3) Platform for Flasks "SP120" / "SP220"



with Flasks

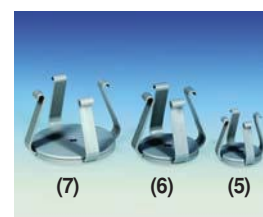


(4) Platform for Separatory Funnels "SP130" / "SP230"



with Separatory funnels

※ witeg general catalogue pages dito.



Flask Holders  
"FH500" / "FH250" / "FH100"

### Platform Selection Guide

| APPLICATION   | PLATFORM   | HOLDER   |
|---|--|--|
| Culturing Microbes Mixed with Erlenmeyer Flask                                | <b>Universal Platform</b><br>SP100 for SHO/SHR-1D<br>SP200 for SHO/SHR-2D              | <b>Flask Holder</b><br>FH100 (50~100ml)<br>FH250 (200~300ml)<br>FH500 (500~1000ml) |
| Staining/Destaining Gel, Washing Blots Gentle Mixing(Shaking)                 | <b>Rubber Mat Platform</b><br>SP110 for SHO/SHR-1D<br>SP320 for SHO/SHR-2D             |  |
| Mixed Sample, Combination Chemistry Combinatorial Chemistry, with Round Flask | <b>Platform for Flask</b><br>SP120 for SHO/SHR-1D<br>SP220 for SHO/SHR-2D              |  |
| Combinatorial Chemistry with Separatory Funnel                                | <b>Platform for Separatory Funnels</b><br>SP130 for SHO/SHR-1D<br>SP230 for SHO/SHR-2D |  |
| with Variety of Size Flask & Bottle   | <b>Universal Spring Rack</b><br>SP140 for SHO/SHR-1D<br>SP240 for SHO/SHR-2D           |  |